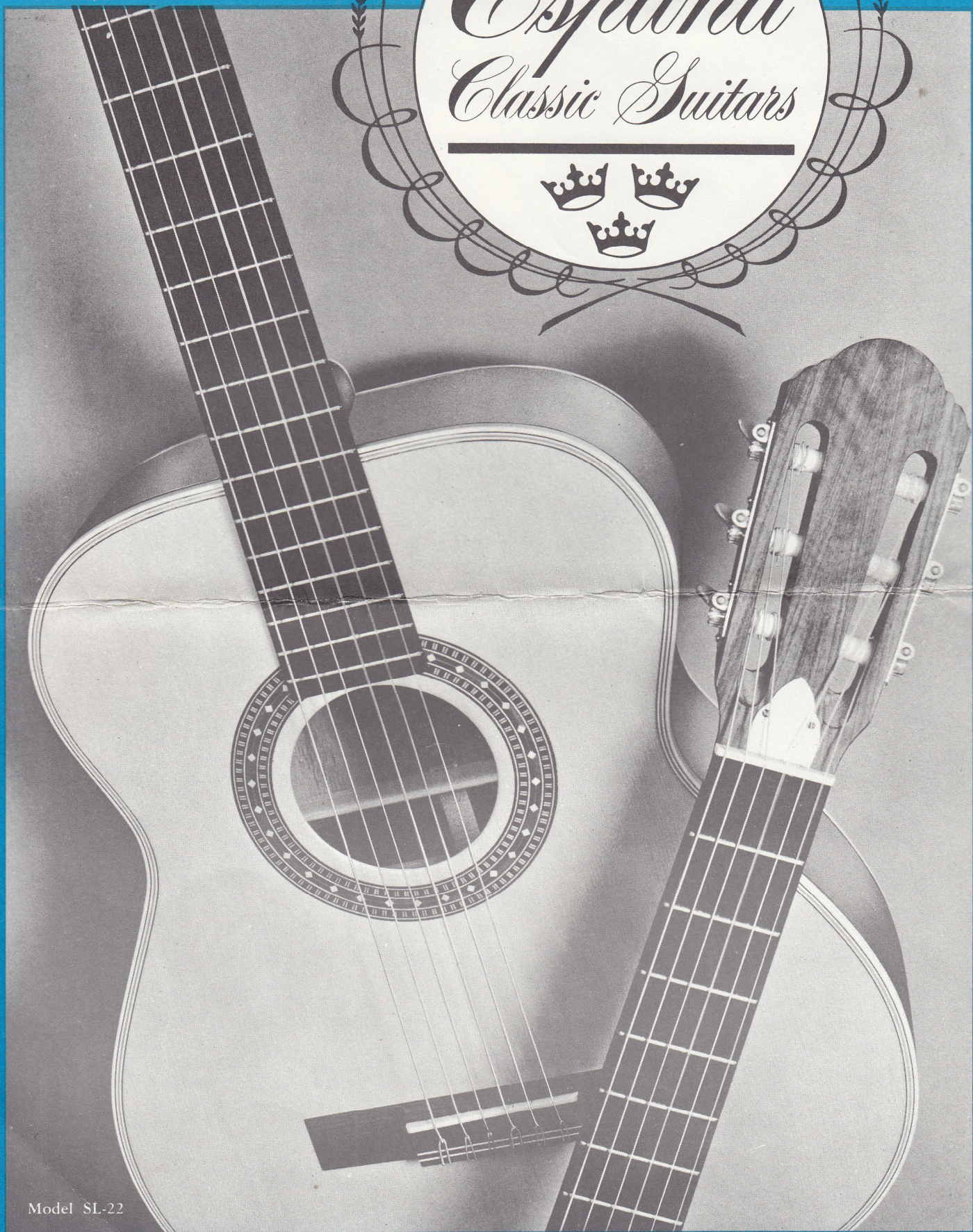


España
Classic Guitars



Model SL-22

SWEDISH CRAFTSMANSHIP IN ITS FINEST FORM!

MODEL SL-1 Concert Size Classic

BODY LENGTH 18 $\frac{3}{8}$ "; SCALE LENGTH 24 $\frac{7}{8}$ "; 18 FRETTS.

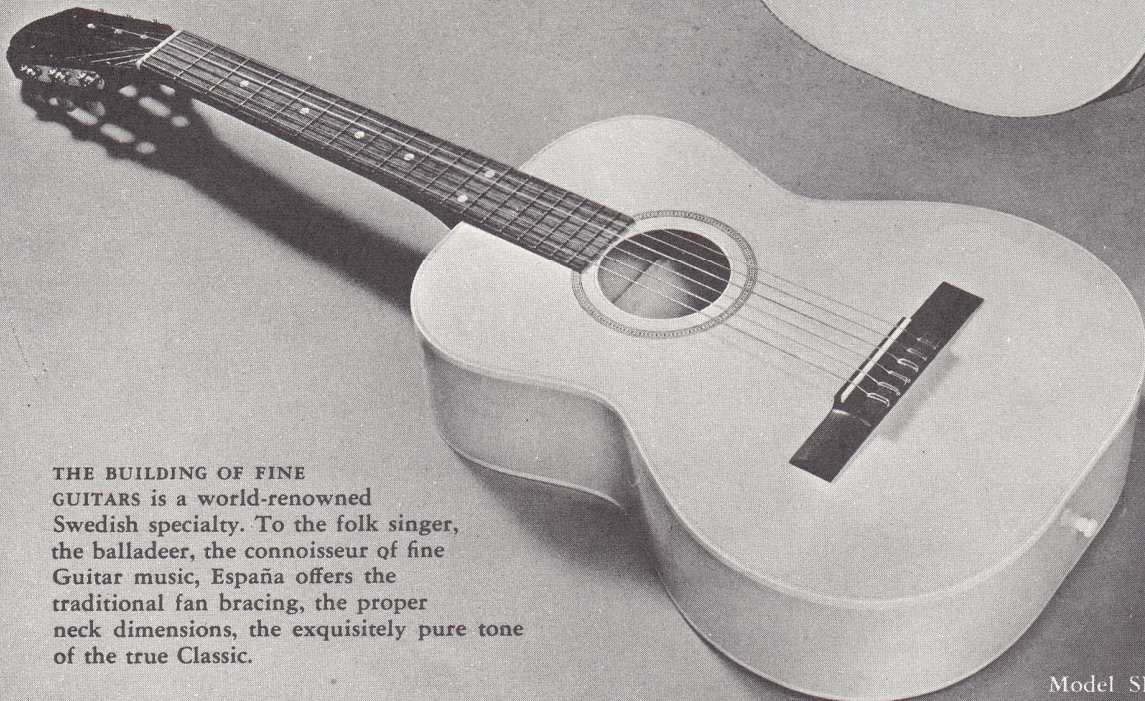
A source of inspiration for the ambitious student! Has a fan-braced top of selected pure grain white spruce; back, sides and neck of magnificently figured mahogany; rosewood fingerboard and headpiece; six white pearl position dots; rosewood bridge. Top edge is bound with heavy white celluloid and inlaid with two lines of green celluloid separated by one line of white celluloid. Soundhole is bound with one line of white celluloid and bordered with one line of green celluloid. Inlaid $\frac{3}{8}$ " away from and around soundhole is a $\frac{1}{4}$ " inlay of wood marquetry of pleasing brown, tan and green design. Has a three-piece GUARANTEED neck; white button engraved machines; white celluloid heel on neck; back edge bound with heavy white celluloid. Entire instrument is mirror-polished by hand. Price **\$109.50B**



MODEL SL-11 Concert Size Classic

BODY LENGTH 18 $\frac{3}{8}$ "; SCALE LENGTH 24 $\frac{7}{8}$ "; 18 FRETTS.

Esthetically appealing to the folk singer, sensitive in tone for the more advanced player. Has a fan-braced top of selected, pure grain white spruce; back and sides of beautifully figured blonde maple; figured mahogany neck; rosewood fingerboard and headpiece; six white pearl position dots; rosewood bridge. Top edge is bound with heavy white celluloid and inlaid with two lines of green celluloid separated by one line of white celluloid. Soundhole is bound with one line of white celluloid and bordered with one line of green celluloid. Inlaid $\frac{3}{8}$ " away from and around soundhole is a $\frac{1}{4}$ " inlay of wood marquetry of handsome brown, tan and green design. Has a three-piece GUARANTEED neck; white button engraved machines; white celluloid heel on neck; back edge bound with heavy white celluloid. Entire instrument is mirror-polished by hand. Price **\$119.50B**



THE BUILDING OF FINE GUITARS is a world-renowned Swedish specialty. To the folk singer, the balladeer, the connoisseur of fine Guitar music, España offers the traditional fan bracing, the proper neck dimensions, the exquisitely pure tone of the true Classic.

Model SL-11

MODEL SL-12 Grand Concert Size Classic

BODY LENGTH 18 $\frac{3}{4}$ "; SCALE LENGTH 25 $\frac{5}{8}$ "; 18 FRET.

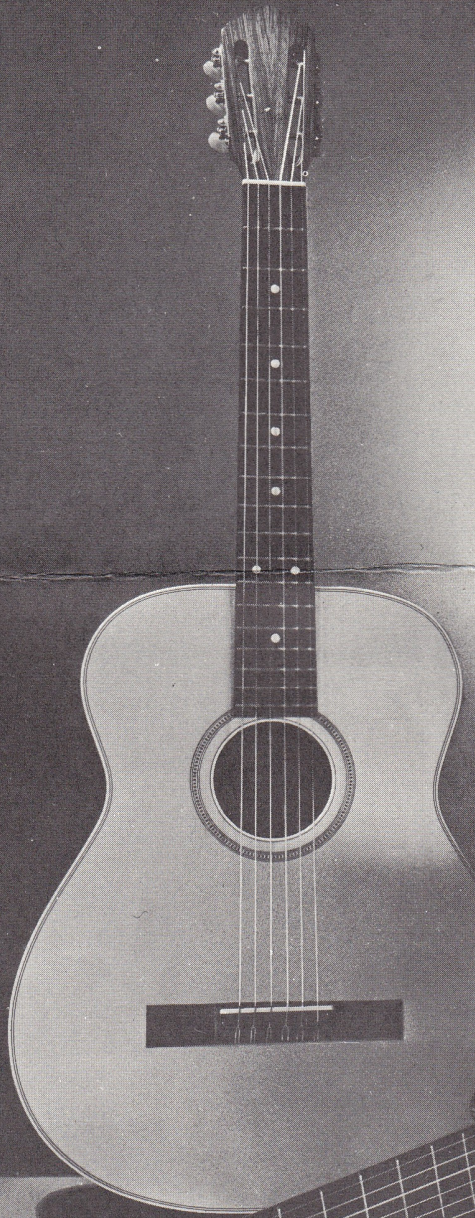
The warmth of tone that only a true Classic can communicate! Has a fan-braced top of selected, pure grain white spruce; back, sides and neck of beautifully figured mahogany; rosewood fingerboard and headpiece; six white pearl position dots; rosewood bridge. Top edge is bound with heavy white celluloid and inlaid with two lines of green celluloid separated by one line of white celluloid. Soundhole is bound with one line of white celluloid and bordered with one line of green celluloid. Inlaid $\frac{3}{8}$ " away from and around soundhole is $\frac{1}{4}$ " inlay of wood marquetry of pleasing brown, tan and green design. Has a three-piece GUARANTEED neck; white button engraved machines; white celluloid heel on neck; back edge bound with heavy white celluloid. Entire instrument is mirror-polished by hand.

Price

\$145.00B



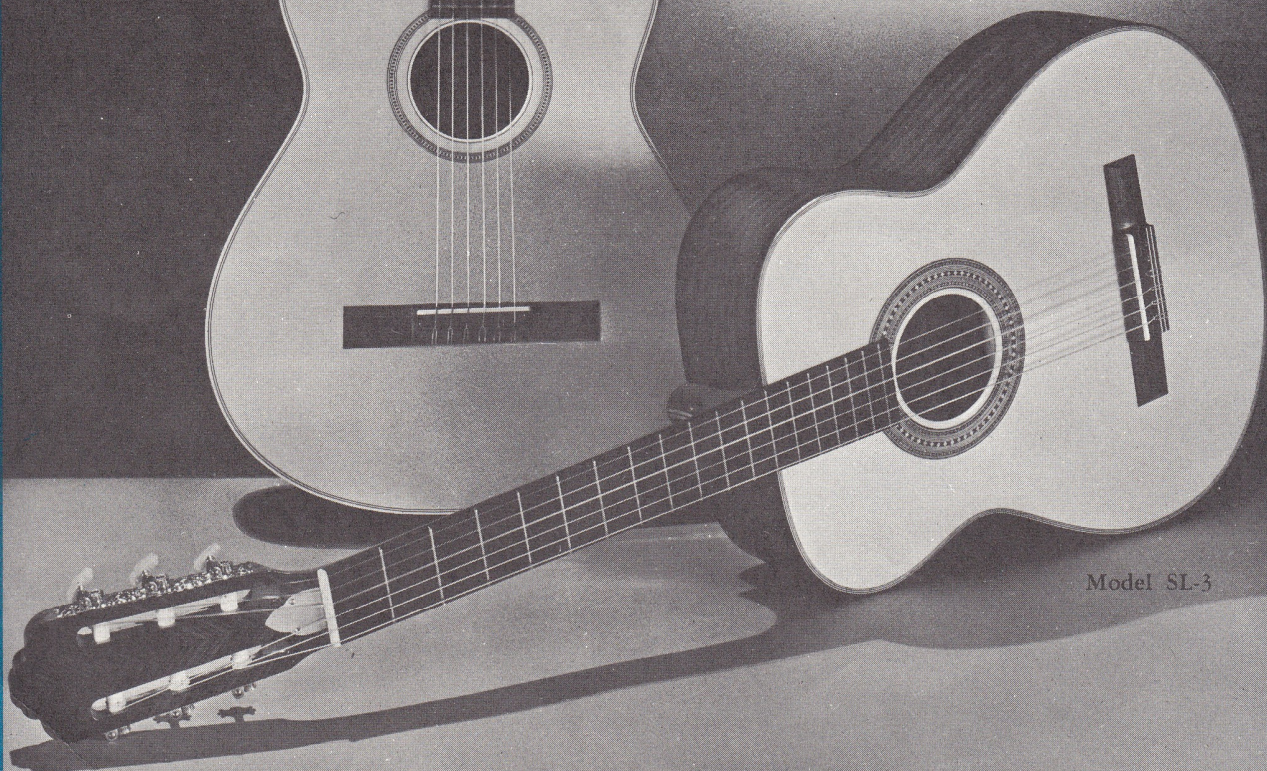
Model SL-12



MODEL SL-3 Grand Concert Size

BODY LENGTH 18 $\frac{3}{4}$ "; SCALE 25 $\frac{5}{8}$ "; 18 FRET.

The entire spectrum of tone color in the true classic tradition! Has a fan-braced, specially selected white spruce top; back, sides and neck of exquisitely matched and beautifully figured mahogany; ebony extension fingerboard; mahogany herringbone veneer on headpiece; rosewood bridge. Top edge is bound with figured rosewood and inlaid with three lines of brown wood marquetry; back edge is bound with figured rosewood. Soundhole is decorated with a one-inch wide circle of beautifully inlaid marquetry in various shades of brown. Has a GUARANTEED seven-piece laminated neck with adjusting rod (contrasting color woods make lamination easily visible); gold plated engraved machines with fancy pearl buttons and heavy white string posts. Entire instrument is mirror-polished by hand. Price **\$259.50B**



Model SL-3



Model SL-2



MODEL SL-2 Grand Concert Size Classic

BODY LENGTH 18³/₄"; SCALE LENGTH 25⁵/₈"; 18 FRETS.

Encourages facility on the fingerboard because of its superb proportions. Has a fan-braced top of selected white spruce; back and sides of beautifully figured matched grain walnut; ebony fingerboard and walnut veneered headpiece; rosewood bridge. Top edge is bound with extra heavy white celluloid and inlaid with two white, two black and one green line of celluloid; back edge is bound with heavy white celluloid. Soundhole is decorated with ³/₄" wide circle of beautifully inlaid marquetry of complimentary colors. Has a GUARANTEED three-piece mahogany neck with adjusting rod; white button machines with heavy white string posts. Entire instrument is mirror-polished by hand. Price **\$189.50B**

MODEL SL-22 Grand Concert Size Classic

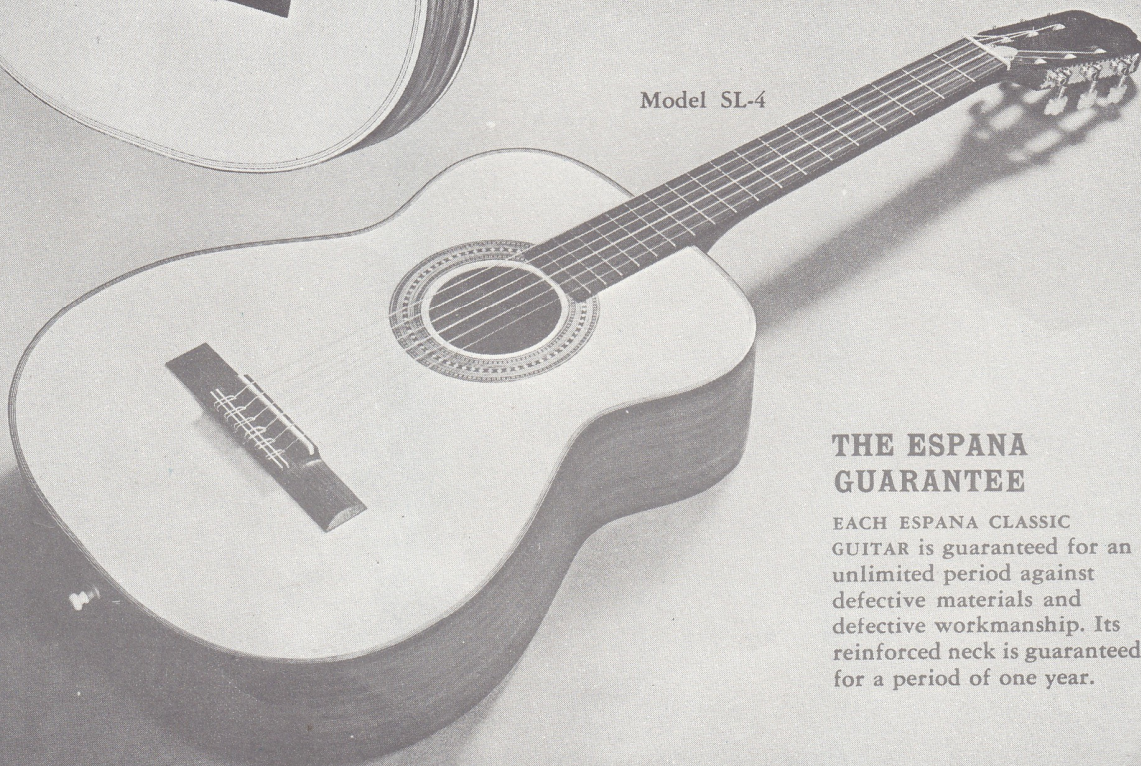
Same as Model SL-2 described above, except back and sides are of mirror-polished blonde maple. See Page 1 for illustration. Price **\$199.50B**

MODEL SL-4 Grand Concert Size Classic

BODY LENGTH 18³/₄"; SCALE LENGTH 25⁵/₈"; 18 FRETS.

For the authentic classical attack that results in musical performance of the highest order. Has a fan-braced, specially selected white spruce top; back and sides of extremely well-seasoned rosewood, perfectly matched in color and texture; ebony extension fingerboard and rosewood veneer headpiece; rosewood bridge. Top edge is bound with natural color maple and inlaid with five lines of brown wood marquetry; back edge is bound with natural color maple and inlaid with one tan and one brown line of wood marquetry. Soundhole is decorated with one-inch wide circle of beautifully inlaid marquetry in various shades of brown. Has a GUARANTEED seven-piece laminated mahogany neck with adjusting rod (contrasting color woods make lamination easily visible); gold plated engraved machines with fancy pearl buttons and heavy white string posts. Entire instrument is mirror-polished by hand. **\$339.50B**

Model SL-4



THE ESPANA GUARANTEE

EACH ESPANA CLASSIC GUITAR is guaranteed for an unlimited period against defective materials and defective workmanship. Its reinforced neck is guaranteed for a period of one year.